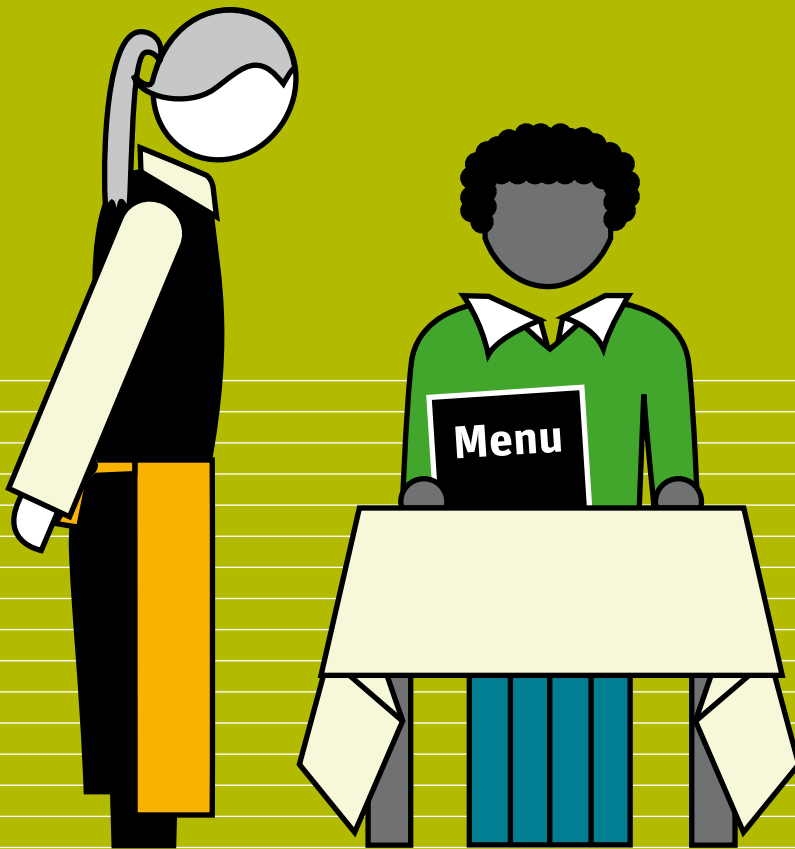


G+



INVITATION TO THE WAKE Sustainability for vocational training

EPIZ e. V.
Zentrum für Globales Lernen



Imprint

Publisher

Entwicklungspolitisches
Bildungs- und Informationszentrum
Schillerstr. 59
10627 Berlin
Tel. 030 692 64 18
epiz-berlin.de

Brillat Savarin-Schule
OSZ Gastgewerbe
Buschallee 23
13088 Berlin
Tel. 030 914 26 60
osz-gastgewerbe.de

Authorship and Editing

Silvana Kröhn

Expertise

Ulrike Minzlaff, Sabine Schofer,
Annette Voigt

Design and Layout

Nayeli Zimmermann
SV Associates

Copyright

Berlin, 2013

Funding

Dieses Material entstand im Rahmen des Projekts »Zukunftsfähig arbeiten in einer globalisierten Welt II« mit finanzieller Unterstützung des BMZ und des kirchlichen Entwicklungsdienstes durch Brot für die Welt – Evangelischer Entwicklungsdienst. Der Herausgeber EPIZ e.V. ist für den Inhalt allein verantwortlich.

JOBMARKET

HOTEL SECTOR AND GASTRONOMY

Lukull
Gourmet-Restaurant

Concerning the opening of our restaurant in Charlottenburg with a capacity of about 70 seats we are looking for


**committed chefs as well as
waiting staff (m/f)**

with a good education and delight in fine dining.

- * Have you completed a vocational training in the hospitality industry or gastronomy?
- * Have you already had the chance to gain experience?
- * Are you looking for a new challenge?

In this case we would be happy to receive your letter of application. Please send your comprehensive application via e-mail to: buero@Lukulli-Gourmet-Restaurants.de

Lukulli-Gourmet-Restaurants
is a stock corporation with nationwide presence in Germany.
In the 49 restaurants, highly dedicated employees
provide fine cuisine in a stylish ambience for everyone.

Lukulli
Gourmet-Restaurants



Notice

Dear fellow employees,

In deep mourning we have to inform you that our valued chairman of the executive board Martin Fuchs has been found dead. Investigation by the criminal investigation department has begun.

We will invite you to a joint memorial ceremony soon.

Yasemin Yilmaz and Peter Meier
–Executive board–



THE LUKULLI WAKE



DAUGHTER EXECUTES TOP MANAGER



Berlin, April 2, 2012
Yesterday morning Martin F., chairman of the executive board of the restaurant chain Lukulli, was found dead in his apartment. Apparently, it is a family drama. For the time being, the police detained the victim's daughter Denise F. for questioning.

Neighbours reported that the victim and the young apprentice, who is actively engaged in an association that is critical of globalisation in her spare time, repeatedly came into conflict with each other. Neighbour Insa P.: "We heard her calling her father a child murderer. As if he was to blame for starved people in Africa. She's nutty as a fruitcake!" Neighbour Mehrdad J. also witnessed the disagreement: "Once when they visited us, they argued all the time." Now Denise F. is threatened by many years of imprisonment if the suspicion is confirmed.

The term 'globalisation' derives from the word 'globe' – a sphere that depicts our planet and which has all countries and oceans painted on. In 1983 the American professor of economics Theodore Levitt was looking for a word to describe how closely all economic action by the people on our planet is connected. Never before, have so many people traded so many objects across the globe with each other. And this does not only apply to objects, but also to ideas, fashion, and music – and first and foremost: money fine. Levitt believed that nobody potters around alone anymore – not even a farmer in Africa. How we act and what we produce and buy affects all other people on this planet. The economy is no longer limited to a village, city or country, but rather cross-linked with the whole world, and therefore 'globalised' – 'globalisation' had been given its name.

M1 CRITICAL OF GLOBALISATION? STARVATION?

It's all Greek to you?

If so, then do research. Because you are working at Lukulli,
and as an employee of this restaurant chain you want to know
about what happened.

Do your research:
Pros and cons of globalisation

Web tip: www.wikipedia.de
› Globalisation and Criticisms of globalisation

Pros

Cons

Do your research:
What is the connection between globalisation and
worldwide starvation that critics of globalisation like
Denise Fuchs see?

Web tip: viacampesina.org



THE LUKULLI WAKE



PARTNER IN LIFE OF DENISE F. ARRESTED

Berlin, April 3, 2012

The life partner of Denise F., whose father was found murdered two days ago, is now in custody too. Prior to this, Denise F. was arrested due to strong suspicion. Investigations revealed that her life partner Ole P. had quarrelled repeatedly with the top manager, because he put no value on sustainability at his restaurant chain Lukulli. This was reported by friends of the family. According to them the advocate

for sustainability Ole P. tried to make Martin F. feel guilty over and over again. Supporters of a sustainable way of life believe that, the economy has an ethical responsibility. It should not be about the profit in the annual balance, but about long-term prosperity for everyone involved in the economic process. Martin F. was the chief of the executive board of the restaurant chain Lukulli that runs 49 restaurants throughout Germany.

Introduction of the three pillars of sustainability using the example of fishery

Environment
Biological diversity is preserved by fishing quotas.

Economy
A long-term and stable income is secured.

Social aspect
Fishers are employed and provide for their families.

Sustainability and nutrition

Everyone talks about the term sustainability today. But what is the issue here?

Sustainability is defined as follows:

“To answer the needs of the present generation without threatening the ability of future generations to meet their own needs.”

Therefore being economical in a sustainable and durable way means that: We need to secure a sound environment, society and economy for our children and grandchildren. Achieving one without the other is impossible.

Using fishing as an example, this means to always fish only as much in one fishing area as possible in order to secure that the stocks are able to regenerate and enough juvenile fish can grow up. One goal among others of sustainable fishery is to preserve biological diversity and to safeguard the jobs of local fishermen and fisherwomen.

Sustainable economic activity therefore also means to consider coherences and to regard environmental aspects equally to social and economic aspects – as well as health aspects in the nutrition sector. To this end political regulations are mandatory as well (such as fishing quotas or labeling requirements for groceries).

M2 CORPORATE RESPONSIBILITY

Discuss and mark with a cross!

How responsible should restaurants and other companies be?



Most guests do not care about healthy eating – all they want is large servings of meat. The customer is always right – I live by this rule!

Initiated by food scandals, there are more and more guests who set value on certificates (e. g. organic) and quality. It is also profitable to meet these demands.

I believe that serving good quality is part of professional ethics.

I would like to work at a company that provides good payment and treatment for all employees.

It is important to me that the resources and products that are being used have been provided under good working conditions (e. g. payment of the harvesters).

I can clearly square it with my conscience to serve endangered fish species. Concerning that, I also don't see any problems for my future: If one fish species is extinct, I simply serve another.

Phrase your own guiding principle here – your personal professional ethics towards sustainability:

Professional ethics

The term denotes moral principles of an occupational group. This does not necessary mean legal obligations. Some violations, however, lead to criminal charges, such as the use of spoiled ingredients.

Blitz

BERLIN

Blitz-INTERVIEW CONCERNING »LUK

CRUSADE AGAINST RESTAURANT CHAIN OF MURDERED TOP MANAGER

Berlin, April 4, 2012

The restaurant chain Lukulli has been the target of actions and demonstrations of the anti-globalisation scene over and over again in the past. We are interviewing Susanne Polanski of FairGlobal.

Editors: Miss Polanski, Fair-Global repeatedly organized petitions and street campaigns against the restaurant chain Lukulli. Why?

Polanski: The managers of the restaurant chain are only interested in profit. They don't care whether the food they offer is unhealthy or harmful to people in countries of the South, or not.

Editors: Why unhealthy? One dish on the menu, for example, is lean chicken breast.

Polanski: Lean on fat, rich in hormones. These chickens come from intensive livestock farming. Besides vegetating in small cages there, they are being stuffed with medication and growth hormones. The leftovers of this hormone-fed

chicken have probably been shipped frozen to West Africa, and are not only destroying the local poultry production because they are unbeatably cheap, but also public health. After all there is no unbroken cold chain in these countries.

Editors: So it's better to take the low-fat beef steak?

Polanski: There is no objection to a steak from an organic farm in Brandenburg. Lukulli, however, serves steak from an animal that has been fed on soy from South America. There is a high probability that rainforest has been cleared there for precisely these soybean fields.

Editors: So a fresh fish from local waters?

Polanski: Oh well, you know, fish that comes from German waters, where fishing quotas are closely monitored, is long gone. Most likely you are eating fish that has been caught illegally in the waters of West Africa. They have hardly any fish left there. The result is that the local fishermen are unem-

ployed now and people there have nothing to eat.

Editors: What else do you criticize the managers of Lukulli for?

Polanski: They take part in global land grabbing by investing their profits in the acquisition of land in countries of the South. They also invest other profits in nourishment funds and thus ensure that food prices are going up, and people in countries of the South can't afford it anymore. You know, we've been seeking to talk to the management, in order to discuss the purchasing policies of the restaurant chain so often, but we've always been denied.

Editors: Could that be due to your course of action? Concerning that you have publicly criticized and organized direct actions.

Polanski: We did not do that until we'd been rejected over and over again.

Editors: Thank you for talking to us.

Blitz-T
Why b
vegan

Do you have to c
between a health
modern lifestyle a
sustainable, comp
lifestyle? No, you
all! Have a look a
Society's film, 'Ma
Connection', to exp
reasons why peopl
become and stay v
You can watch the
chapters on our we
straight through wit
on our YouTube pla
What is a vegan?
A vegan is someone
to live without explo
animals, for the ben
animals, people and
planet. Vegans eat a
based diet, with noth
coming from animals
meat, milk, eggs or h
example. A vegan life
avoids leather, wool,
other animal products
clothing or any other
Some of the main rea
choosing a vegan life
It's a healthy choice
A balanced vegan diet
referred to as a 'plant

M3 IS THE CRITICISM OF LUKULLI JUSTIFIED?

The murder of Martin Fuchs is creating quite a stir. Acquaintances and relatives ask you if there's any truth to the reproaches addressed to your employer Lukulli. Journalists also stand in front of the restaurants and want to question employees. You have even been invited to take part in expert debates on television!

Do research together with your colleagues on one of the topics addressed in the interview. Is there any truth to the reproaches against your employer Lukulli? In addition, consider possible approaches to each topic (professionally / privately).

Write the most important information clearly legible on cue cards and prepare for the debate on television. You have arranged this event with your boss. You are free to speak your mind – without consequences under labor law. To this end, appoint one speaker for each small group.

Animal husbandry

- What's the difference between intensive livestock farming and species-appropriate husbandry?
- What are the pros and cons of both types of husbandry?

Links

Wikipedia › Intensive farming, free range
 Bioland › www.biotiere.de (German)
 Tierschutzbund › www.tierschutzbund.de (German)

Poultry exports to West Africa

- How do meat exports to West Africa affect the local economy?
- How do they affect the health of the population?
- What approaches are being suggested or which ones do you see?

Links

SOS Faim › “Chicken Exports: Europe plucks Africa!”
 Youtube › “Struggle of the Chicken – Africa”

Appreciation of groceries

- In what fields are groceries discarded?
- What are the effects of the discarding?
- What can we do about it?
- What is “dumpster diving” and why do people dumpster-dive?

Links

Wikipedia › Garbage Picking
 Youtube › “Dumpster Diving” › Newsworld

Nourishment funds / commodity speculation

- Why is speculating with nourishment funds interesting to investors and banks?
- What is the global scale of food speculation and what are the consequences for the population?
- What are sustainable financial investments?

Links

World Development Movement › Food Speculation
Stop Gambling on Hunger
Youtube › “Speculation and Manipulation of Food and Commodities”

Sustainable fishing

- What are the dimensions of overfishing today?
What causes overfishing?
- What’s the connection between overfishing and hunger in Africa?
- How do customers recognize fish from sustainable fishing?

Links

Greenpeace › Oceans
Youtube › “The Need for Sustainable Fisheries” › WWF

Cattle husbandry / soybean cultivation

- What’s the connection between soybean cultivation and beef?
- What’s the criticism of soybean cultivation and what alternatives do critics suggest?

Links

Greenpeace › Forests / Amazon
Youtube › “How Brazil is halting deforestation in the Amazon” › The Guardian

Land grabbing / Acquisition of land

- What are the dimensions of the acquisition of land (by foreign investors)?
- What are the motives of the investors?
Why do governments accede to that?
- What is the criticism on the investments?

Links

Oxfam › Grow – Issues – Land Grabs
Youtube › “A beginner’s guide to land grabs” › Oxfam

M4 LABEL TRIVIA

Draw arrows to match the labels to the descriptions.

Source
Nachhaltiger Warenkorb
www.nachhaltigkeitsrat.de (slightly modified)



The guidelines of the Federal Association of Organic Viticulture include preservation and improvement of the natural soil fertility, promotion of biodiversity and the creation of a secure existence based on satisfying living conditions as principles of organic wine-growing.

The label is the German marking for organically produced products. This label is sometimes used together with other markings, such as trade labels or farmers associations' labels.

In addition to stringent guidelines for crop farming, animal husbandry and animal feed, the processing of resources is also regulated. The criteria and restrictions are more stringent than the ones for the EU-Bio-Label.

This label guarantees that the product is vegan: Both product and the production process are free of any animal products such as meat, milk, eggs etc. and no animal tests were conducted during its development and production.

The EU label Organic Farming denotes groceries that have been cultivated under the requirements of the EC organic regulations

In cooperation with fisheries experts and environmental organizations, the MSC has elaborated standards for sustainable fishing in order to preserve global fish stocks in the long run.

Quality-oriented, humane and environmentally friendly animal husbandry is the top priority of the farms that get this label. Organically produced fodder is not mandatory.

This label tags products that are traded under fair conditions. One of the most important criteria for a product to receive the label is the payment of minimum prices, that cover the costs of production as well as general living expenses of the families involved in the production process.

Blitz BERLIN

THE LUKULLI WAKE

Berlin, April 5, 2012

Denise F., the daughter of the murder victim, and her life partner Ole P. have been released from custody after they were able to show that they had managed to persuade Martin F. to follow a sustainable business strategy. After arguing for years, they had reconciled and developed a concept for sustainable sourcing. This concept was supposed to be presented and put to vote at

this year's stockholders' meeting in May 2012. Other members of the executive board appeared to be surprised: "We don't have any knowledge about a sustainability concept", board member Yasemin Yilmaz commented. The inspectors investigating the case, Janine Holmes and Max Watson of the criminal investigation department, now suspect the perpetrator(s) inside the victim's professional environment.



DENISE F. AND OLE P. RELEASED FROM CUSTODY

Deceased top manager apparently planned to shift to sustainability

BLITZ BERLIN

THE LUKULLI WAKE

MOURNING FOR MURDERED TOP MANAGER

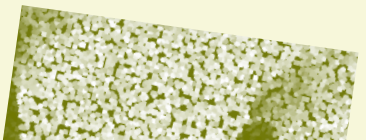
Berlin, April 6, 2012

The business elite of Berlin and Germany attended the funeral of Martin F. The grieving widow Mira F. was supported by friends of the family and her daughter. The police are looking for a mysterious couple that kept at the sidelines at the funeral for questioning. If you have relevant

information please contact: Inspector Janine Holmes, Tel: 030 570769918

During a press conference the police gave details on the circumstances of the crime. The autopsy confirmed the suspicion that Martin F. was killed with a blunt, heavy object. Holmes: "Apparently, there was a fight. We found skin residue,

possibly of the perpetrator, under the fingernails of the victim. DNA analysis is currently in progress. We expect the results to be available in the near future."



M5 LUKULLI'S SUSTAINABLE BUSINESS STRATEGY

While looking for a ball point pen, you came across a draft of the afore-mentioned sustainability concept. Some parts are illegible. Try to fill in the gaps.

Sustainable management at Lukulli	Resources/ Groceries	Furnishing of the dining area	Furnishing of the office	Human resource management
health-promoting			ergonomic desks / chairs	
socially fair	use of Fairtrade resources (e. g. cane sugar)	kid's corner	handicapped accessible	educational leaves / support for advanced training
environmentally sound				
economical			Preferring energy saving products when buying new equipment	

Blitz

BERLIN

AND GREEN

spent the past few years and creating hundreds of smoothie recipes that are sure deliciousness, if we do so ourselves. We're both to young children and know exhausting and busy that can you!. We had enough and rked on a green smoothie ey in 2011 with our families h lives in California and Jen (lorida).

her, we've lost weight, d more energy and nour- our children without so as a fuss.

it all starts with a simple n smoothie! These plant-pow-reen drinks are packed full afy greens, fresh fruits and ating liquids that keep you ished and keep your cravings ay for hours. By introducing e leafy greens into your diet, will reap the benefits of phy-riants, antioxidants, and ntial vitamins and minerals. her words— green smoothies rock your body.

you tired of eating foods that e you tired? Do you want to better but just can't stick with Are you curious about a n-eating lifestyle, but don't w where to start?

ve been where you are, and re so excited because we can o you! We make it super sim- e easy and fun for you. No more ssswork. Just start with blend- one green smoothie a day. t's it! Just by adding this one anely healthy habit into your ly life (and it only takes a few nutes a day!) you can really nge you and your family's life. e you ready to take the first p?! To get started, try our ginner's Luck recipe (it's still e of our favorites). We also ally want you to join our next e LIVE 30-Day Green Smoothie hallenge. We will send you a eekly shopping list and 5 recipes week to help you make green oothies a part of your lifestyle. eers to your health!

THE LUKULLI WAKE

Blitz INFO

Fairtrade

World trade is not concerned with the the people who grow and harvest our coffee or sugar, but only the profit that can be made. The producers are very often so poorly paid that they cannot subsist on their wages. As a result, many of them form alliances in cooperatives or small farmers associations, hoping to be able to achieve more together. Fairtrade has focused on just these people, because all people have a right to obtain adequate payment for their work and to live in dignity. Faire Trade products are sold in supermarkets, in (one-) Worldshops or by wholesale.

Principles of Fairtrade

- Producers in Africa, Asia and Latin America receive adequate payment for their work. They get a minimum rate that assures their livelihoods.
- Purchases are made directly from the producers. The intermediate trade, that would like to snack on the profit as well, is avoided.
- By establishing long-term contracts and minimum rates, the people who are involved in the production process are less dependent on the fluctuations of the (world-) market prices and can count on a more stable income.
- In addition, the cooperatives receive a Fairtrade bonus for the development of projects such as a school or a small hospital ward.
- The routes of products from Fairtrade can be traced all the way to the producers. You can be sure that neither children nor adults are being exploited. This is ensured by regular, independent checks in the course of the certification.
- The environment is taken care of as well. Among other things, the producers are supported during the transition to organic farming. This also ensures that workers' health is no longer affected by pesticides.

SCANDAL: MOURNING WIDOW ARRESTED ALONG SIDE SUGAR BARON AT THE AIRPORT



Berlin, April 8, 2012

Just two days after the funeral, Mira F., the widow of Martin F., eloped with her lover. The two had met six month ago and have been secretly in a relationship since then. They were arrested at the airport of Las Palmas and brought back to Germany. Inspector in charge, Janine Holmes, announces: "Miss F. is not allowed to leave the country while the investigations are ongoing. She must be available for further questioning." According to statements by friends of the family, Mira F. would have come away empty-handed in the event of a divorce,

due to an ironclad marriage contract. Now, instead, she inherits a fortune.

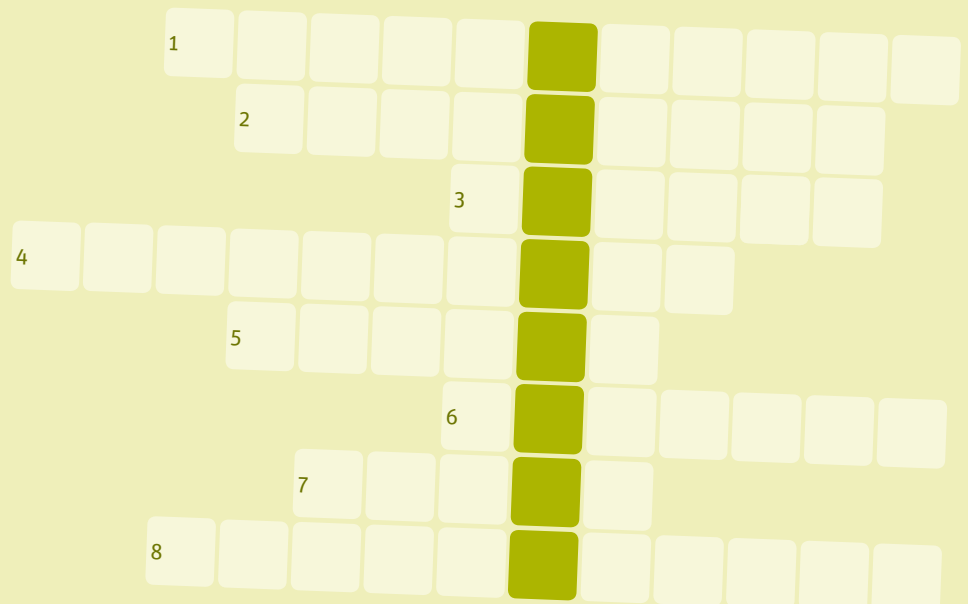
Inquiries by the editors revealed that the lover is none other than the influential businessman Ingo von der Rube, who multiplied his assets by producing beet sugar. Estimated annual sales of his company "Klassezucker" are at about one billion euro. If his company also supplied the restaurant chain Lukulli is still uncertain. Whether or not he knew anything about the sustainability concept that included the usage of South American cane sugar from Fairtrade is uncertain as well.

M6 FAIRTRADE

Read the information and underline the most important statements. Afterwards, solve the crossword puzzle and find out what the solution is. Have fun!

Blitz Crossword Puzzle

- 1 Fairtrade products can be bought both in Worldshops and in ...
- 2 The partners of Fairtrade focuses on enhancing the living conditions of the ... of goods such as coffee and cocoa
- 3 In contrast to Fairtrade, conventional World Trade is only interested in the ... that can be made.
- 4 ... do not only endanger the environment but the workers health as well
- 5 Most popular Fairtrade hot beverage
- 6 Fairtrade does support farmers during transition to ... farming
- 7 Only products that are checked regularly and independently get the Fairtrade ...
- 8 Association of small farmers



THE LUKULLI WAKE

EN LUKULLI AFFILIATES ND AND SHAREHOLDERS HY PROTEST

Berlin, April 9, 2012

The Association of Industrial Magnates (Verband der Groß-industriellen, (VdG)) protested against the media coverage on the case of the murdered chairman of the executive board Martin F. "Just because there is no sustainability label on them doesn't mean that the products have been made under exploitative and ecologically harmful conditions. Most companies have a sustainability strategy and are serious about it", said association spokeswoman Irene Grundig, defending her fellow members. "Most of them don't even know how to spell sustainability", the activist Susanne Polanski of FairGlobal replied. Markus Wiese, purchasing manager of the restaurant chain Lukulli, was keen to calm the waves: "We have

long-term contracts with all affiliates. A transition of our purchasing policy is not an issue. I don't know anything about a sustainability concept." This, later on, also calmed down the Lukulli stockholder meeting, where the sparks really flew. A vote showed that the shareholders came out against a transition to sustainable management, because they don't consider it fit for the future in the long run. Sabine Ahrmann of the Association of Sustainable Shareholders is used to reactions like these: "Most shareholders aim to make a quick profit and have more trust in the renowned subsistence strategy. They don't know that the organic- and sustainability market is booming and that it partially shows annual growth rates of 20 percent."



ECONOMY

1.618 Sustainable Luxury brings Expo, the Future Lab, and Conference, promises to awaken

Advert



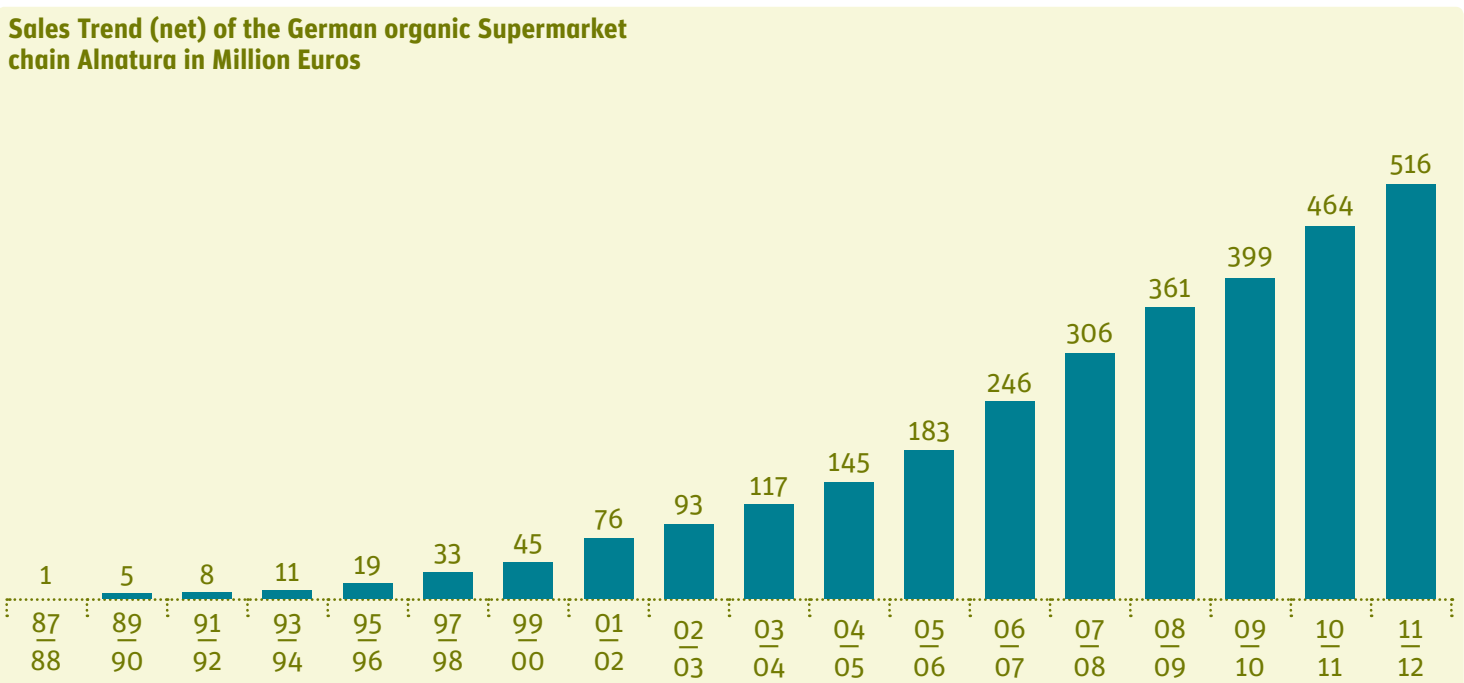
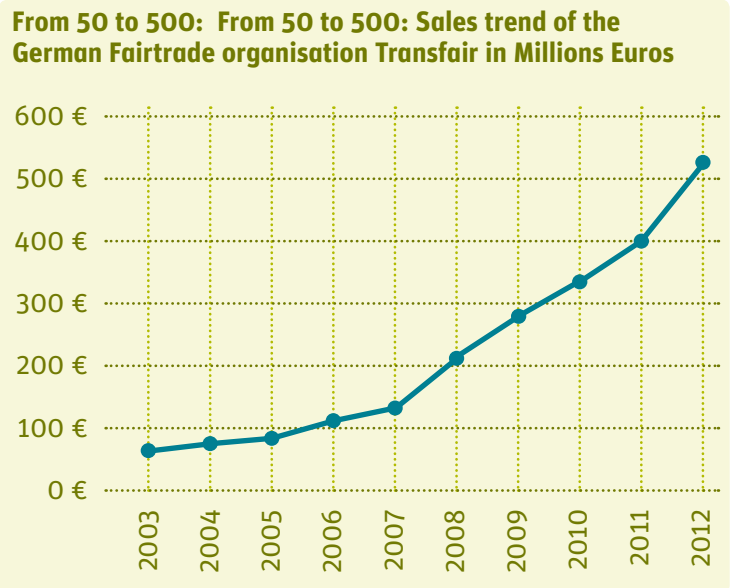
M7 SUSATINABLE COMPANIES AS EMPLOYER?

Did you know that the demand of sustainable goods and services is increasing considerably? What is your position concerning the thesis that “future markets” are arising in this area that will create jobs with that will necessitate new qualifications? Do you think working in a sustainable company might be advantageous for you?

Discuss these questions with a colleague with regard to the two charts below.

Research furthermore in the internet: the Sustainable Restaurant Association connects restaurants worldwide that are managed sustainably. What differentiates these companies from other restaurants?

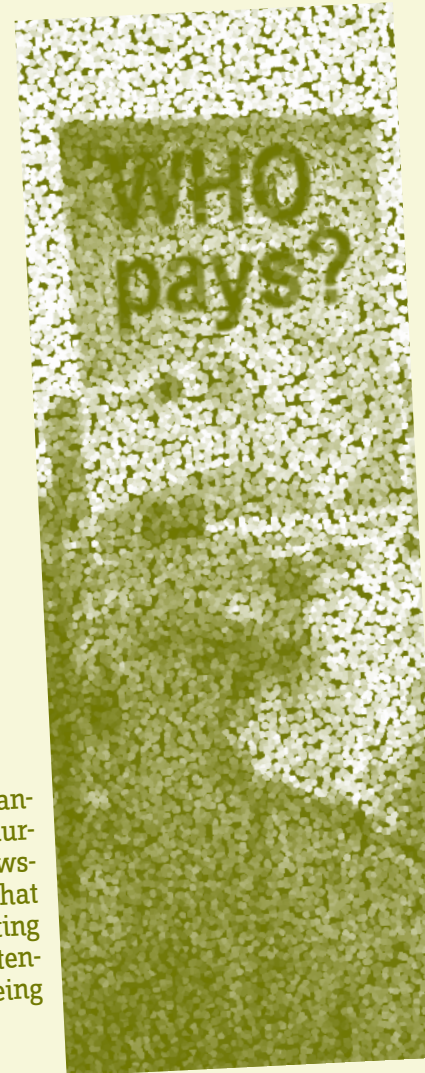
Resources
 Transfair Jahresbericht 2012/2013
www.fairtradedeutschland.de/fileadmin/user_upload/presse/presse_2013/Pressemappe_Jahresbericht/2013_Jahresbericht_2012_2013.pdf



Blitz
BERLIN

THE LUKULLI WAKE

BRIBERY SCANDAL LEAKED OUT!



Berlin, April 11, 2012

As the spokesman of the department of public prosecution announced, investigations have been initiated against the marketing company Good Fellas. The company is under suspicion of having obtained the acceptance to a tender offer by devious means.

The contract is about a marketing strategy on sustainable management of the Lukulli restaurant chain, whose chief of the executive board, Martin F., has been found dead. So far, the public prosecutor's office did not want to give a statement on who received the

bribe and if the bribery scandal is connected to the murder. Inquiries by the newspaper, however, revealed that DNA samples of all marketing employees involved in the tender offer are currently being analyzed.
Are they the perpetrators?

M8 ADVERTISING SUSTAINABILITY

Inside your locker, you find a draft for an information sheet for guests. The draft that was apparently planned to be an inlay to the menu explains Lukulli's new sustainable management scheme. Who put it into your locker? Was it a mistake? Did someone play it into your hands? Who?

Lukulli
Gourmet-Restaurants



Sustainability at Lukulli
Information sheet for guests





Notice

Dear fellow employees,

A memorial ceremony for Martin Fuchs will take place on April 30. In addition to the family of the departed, all employees as well as our affiliates are invited. In memory of our chief of the executive board we will offer a sustainable buffet. We ask all of you (including the apprentices) to hand in suggestions for the buffet before the 20th of April. Suggestions for describing the sustainability aspects of the dishes are also requested.



Criteria for a sustainable buffet

- local
- seasonal
- ecological
- healthy

You can let these menus inspire you concerning the description of sustainability aspects:

- Voodoo Lily Café » South Africa
- Café St Honoré » Great Britain
- ODE – true food » Great Britain
- Bridges Organic Health Restaurant » Kenya

M9 YOUR SUGGESTION FOR A SUSTAINABLE BUFFET OR MENU

Lukulli
Gourmet-Restaurants



Menu



Blitz

BERLIN

THE LUKULLI WAKE

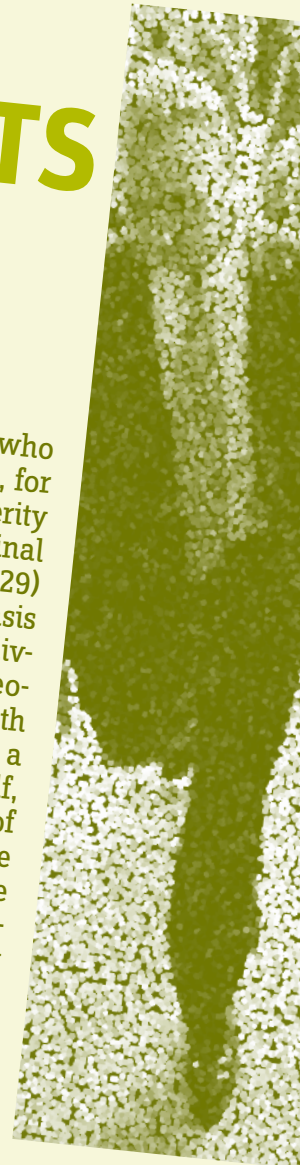
MYSTERIOUS COUPLE REPORTS TO THE POLICE

Berlin, April 12, 2012

In connection with the manager of the restaurant chain Lukulli, Martin F., who was found murdered, two suspects turned themselves in to the police: Zeynab E. and Robert M. kept at the sidelines at the funeral and, by doing so, caught the attention of the police, who were looking for them from that moment on. Zeynab E: "When we heard about the search, we immediately turned ourselves in. We have nothing to hide." According to their own words, both of them belong to an interreligious society which takes a stand for sustainable development and justifies its commit-

ment by religious writings and doctrines. "Genesis 2:15 says: 'The Lord God took man and put him in the Garden of Eden to work it and take care of it.' Therefore, one of the first orders that God gave to man is to treat the earth like a garden. The garden can be laid out just as you like it and you can enjoy your fruits. Nevertheless, you are also responsible for your garden, and hardly anyone is going to make a dumping ground out of his garden, the way it's happening to the earth now." Zeynab E. argues based on a religious writing as well, the Koran: "In the Koran we Muslims are asked to do good and

avoid evil: 'As for those who believe and do good deeds, for them there will be prosperity and a beautiful place of final return.' (Surah 13, Verse 29) To me, this serves as the basis to commit myself to better living conditions for other people." During the last month before his death Martin F., a faithful Christian himself, attended several meetings of the society. Inquiries by the newspaper revealed that the manager mentioned the society in his last will, shortly before his death. The public prosecutor's office is not willing to give comments on the events.



M10 WHAT KIND OF WORLD DO YOU WANT TO LIVE IN?

Adherents to religions or other ideologies and value systems often commit themselves to global justice or the protection of the environment. They refer to religious writings, human rights or other writings.

What is important to you?

Do you live by set moral standards?

So what's your opinion?
What kind of a world would you like to live in?

My parents are Lebanese Christians. I feel at home in Kreuzberg. I want to live in a world where I don't get labeled as Arabic Muslim straightaway because of my name or my appearance. First of all I want to be seen as human being, as woman, as apprentice or as resident of Kreuzberg.

Two things in life are important to me: friendship and my rights as an employee. I think it's important to have friends, to be there for them and to be loyal to them. In addition I'm committed to uphold my rights as an apprentice. Apprentices are being exploited too often.

My brother is confined to a wheelchair. I get very upset when people are stressed out because they have to give way for him or when he gets a negative reply trying to get a job, just because the prospective place of work is not accessibly designed. I want to live in a world where all human beings have the possibility to participate in social life.

'Do as you would be done by.' – That's my motto. If everyone would stick to it, the world would be a little better and more just.

In Islam, the principle of social justice and social responsibility not only refers to fellow human beings, but to the whole creation. Including, for instance, the protection of the weak against economic exploitation by the strong. According to my opinion, Muslims have to take action if this principle is violated.

I want to live in a world where people respect each other. I want them to have equal rights, not only on paper, but also in real life – regardless of man or woman, gay or straight, black or white, poor or rich, old or young. That's what I stand for.

Everyone depends on the other and affects the other. Jesus often dined with people who were socially ostracized. Eating is a symbol for a community where communication and manner should be just.



Notice

In silent grief for Martin Fuchs
we invite you to the memorial ceremony
in the rooms of the Lukulli Restaurant
at Sesenheimer Street 5.

We are hosting a sustainable buffet in
his memory.

Yasemin Yilmaz and Peter Meier

